

PRUVA
34



Happiness begins in nature.

Doğa Madencilik, founded in 1982, is one of the few companies in the industry that have successfully implemented important projects. Doğa Madencilik applies its principle of impeccable quality to all its construction projects and continues to give cities the value they deserve by manufacturing unique products and paying particular attention to architecture and aesthetics.

Doğa Madencilik



DOĞA



PRUVA 34

**Are you ready to enter
a whole new world?**

Doğa Madencilik is launching the **Pruva 34** project in one of the most beautiful locations in Istanbul. Now is the time to unveil **Pruva 34**, featuring the most beautiful view in Bakırköy.



Is it possible to experience
the real Istanbul right at its center?
Is it possible to have a view of all of the
Marmara Sea from a single vantage point?

The best views in Istanbul are waiting for you:
Pruva 34



A life where dreams become reality

The green space that you have been missing is right in the center of **Pruva 34**, featuring thousands of species of trees and colorful flowers, grassy paths, a pool, and the endless Marmara Sea. In short, prepare to live your dreams at **Pruva 34**.

The magic of Istanbul has never been so enticing

You will fall under the spell of the Marmara Sea at this project where blue meets green from every angle.



Immerse yourself in the tranquility of the blue.



A deep blue delight

While creating modern and functional areas that make your life easier, we did not overlook the need for an elegant design. We thus combine functionality with a feast for the eyes.



Feel the joy of living the good life with your family.

Breathe in the smells of earth and grass. Enjoy the nature that surrounds your home with your family. Playgrounds for your children and walking trails await you.





Pruva 34 offers the unique harmony of blue and green.

Witness the flawless harmony between blue and green on every acre of **Pruva 34**.



Feel serene at sunset.

Breathe in the smells of nature and the sea and unwind at the end of the day by taking in views of green and blue to your heart's delight.



The joy of exercising outdoors

We included a basketball and a tennis court for those who like to exercise in fresh air while experiencing beautiful views.

The sea and the pool, together

Enjoy the half-Olympic size pool right in front of your home as you watch the infinite sea views from your window.







The way to your dreams may lead you to your life!

Life is made up of the moments you spend with your family and loved ones. At your home at Pruva 34, happiness and serenity will become an integral part of daily life for you and your family.





When day becomes night,
life begins here once more.



For a life of privilege, choose **Pruva 34**...



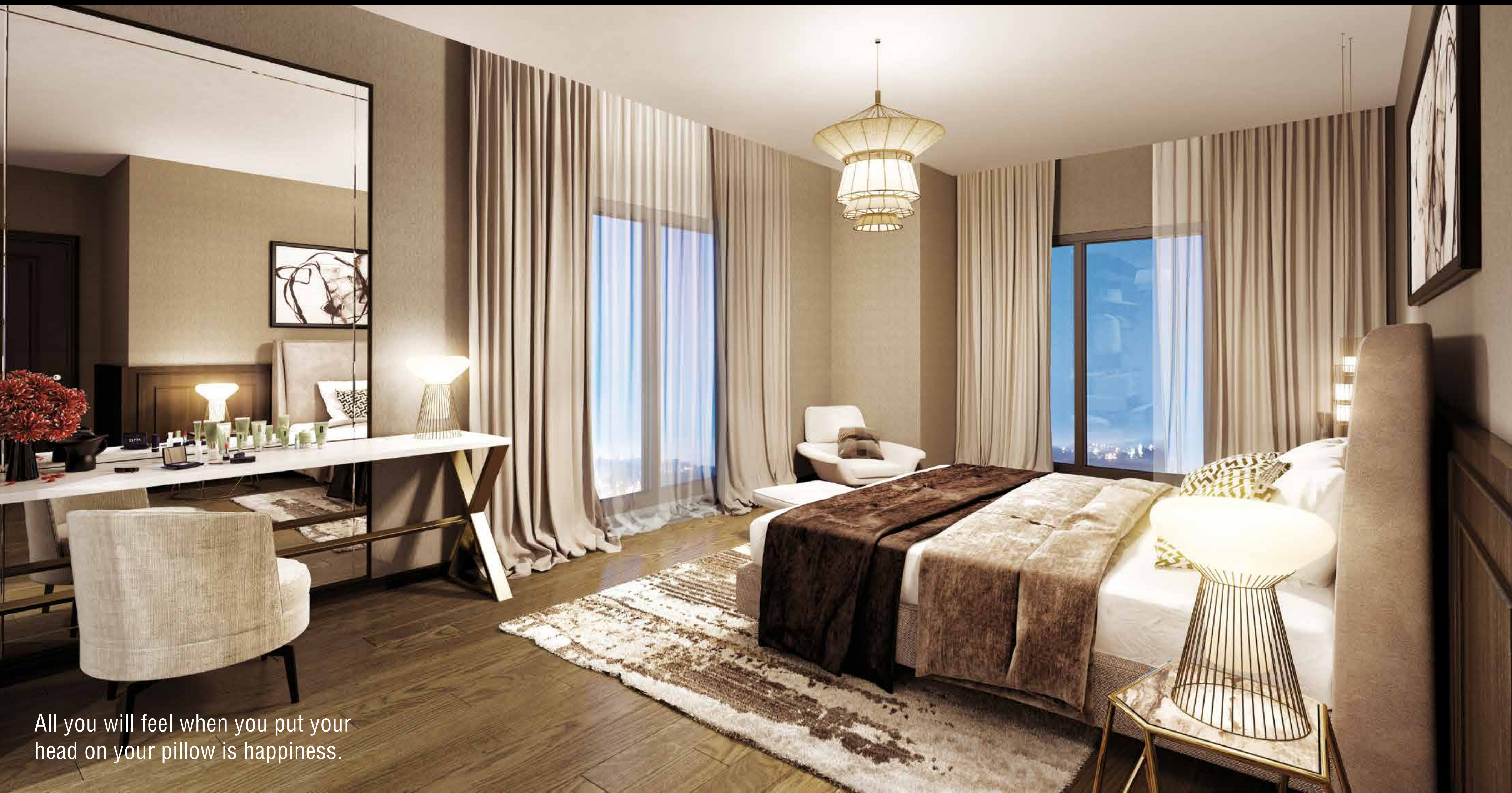
Modern touches, comfortable spaces.

At the meeting point of practicality and comfort, beauty and simplicity become a part of your life. When you return home from work, all you have to do is enjoy that life.

How about inviting the blue into your living room?

The deep blue waters of the Marmara Sea are right in front of you when you look out of the window of your elegant and comfortable living room. Turn your sofa to face the view and you will never lack its joys.





All you will feel when you put your head on your pillow is happiness.

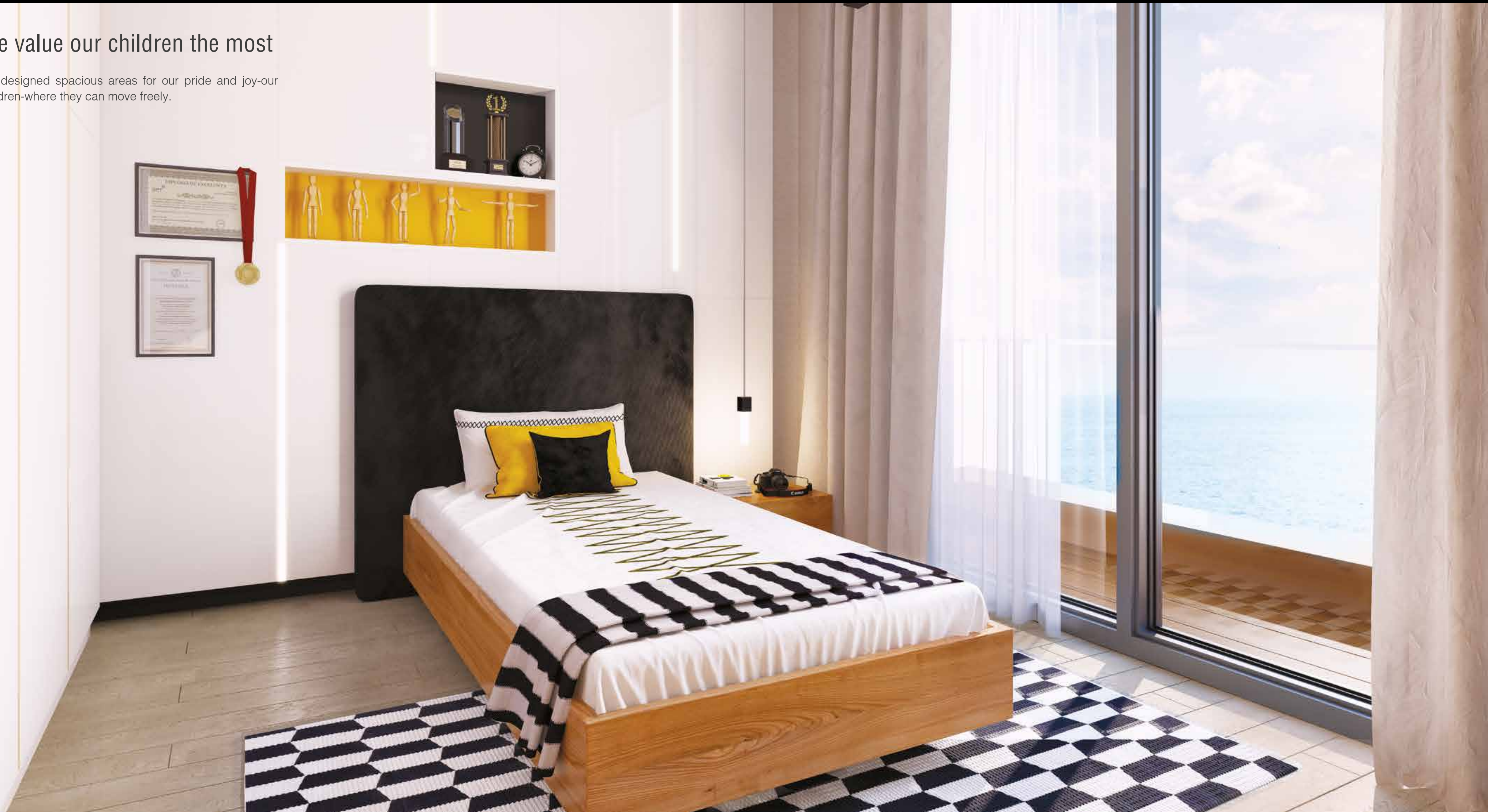
All things are as you would like them to be

We designed aesthetically pleasing living spaces in ways that will introduce innovation into your life through a modern approach.



We value our children the most

We designed spacious areas for our pride and joy-our children-where they can move freely.



You will taste the most delicious meals from your kitchen while enjoying your exceptional views.

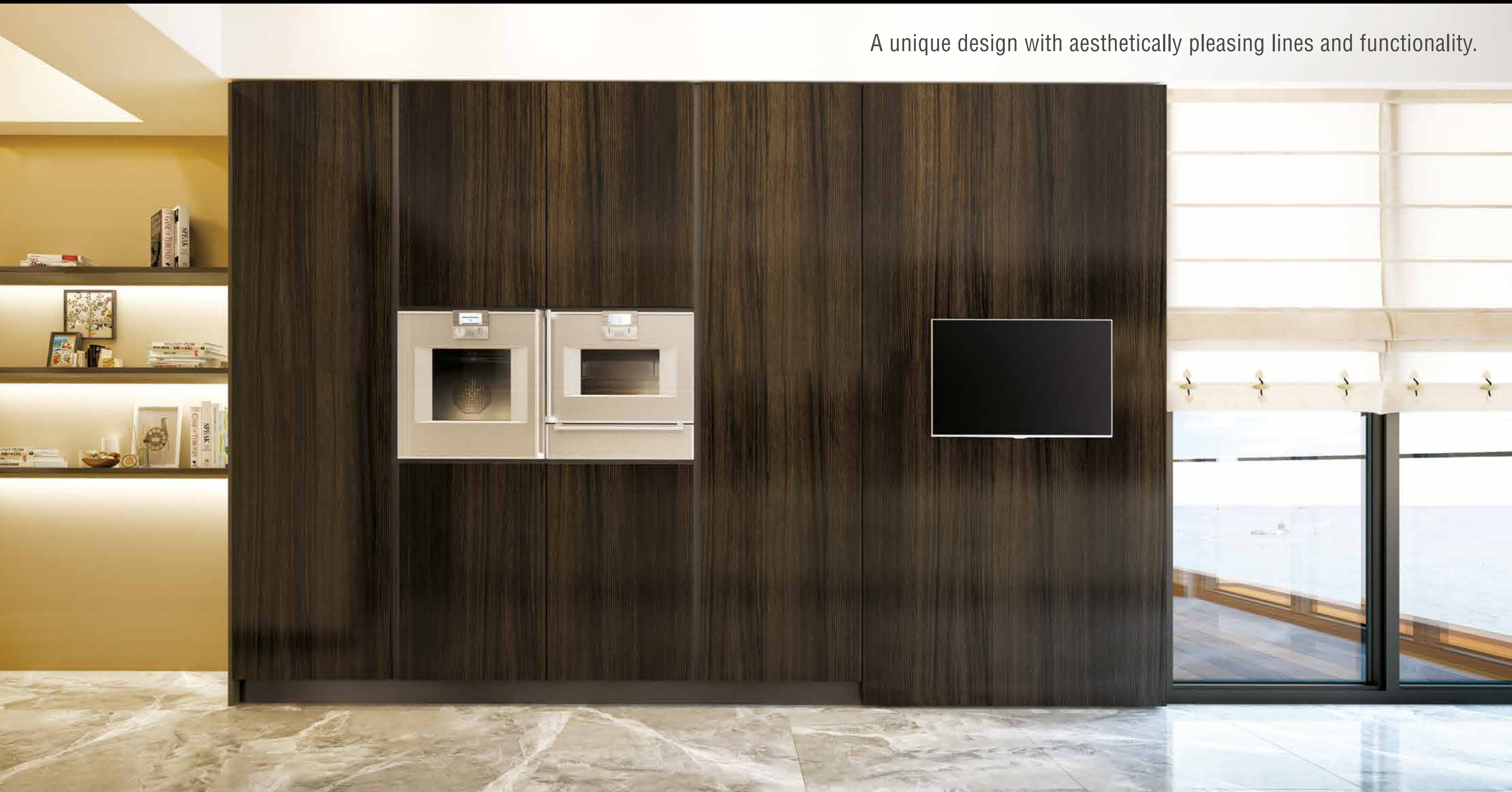
Cooking is both convenient and enjoyable in your kitchen, which has been designed using simple, visually-appealing, high-tech concepts.





The heart of your home will be your warm and modern kitchen.

A unique design with aesthetically pleasing lines and functionality.



Elegant, modern, and simple lines.

We created a unique, modern arrangement for your bathroom, which combines ease of use with a functional and simple design.





The life of your dreams is here at **Pruva 34**

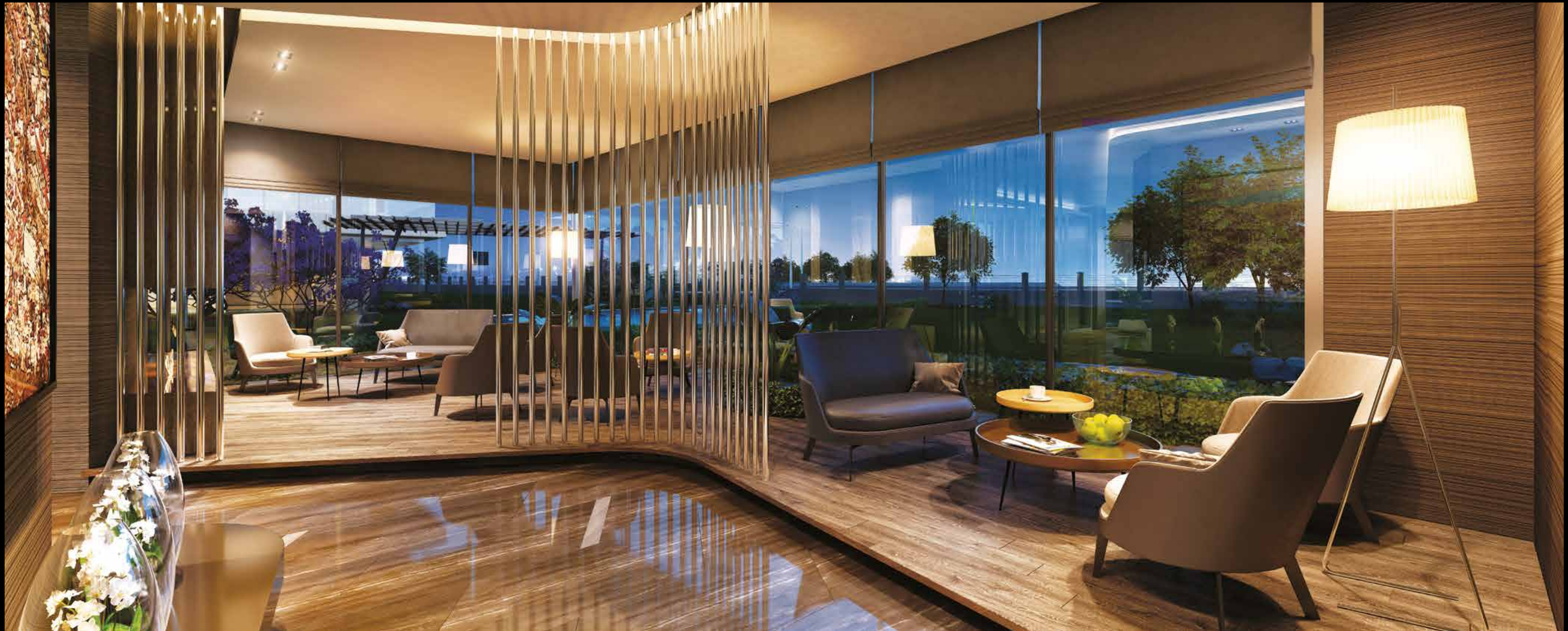


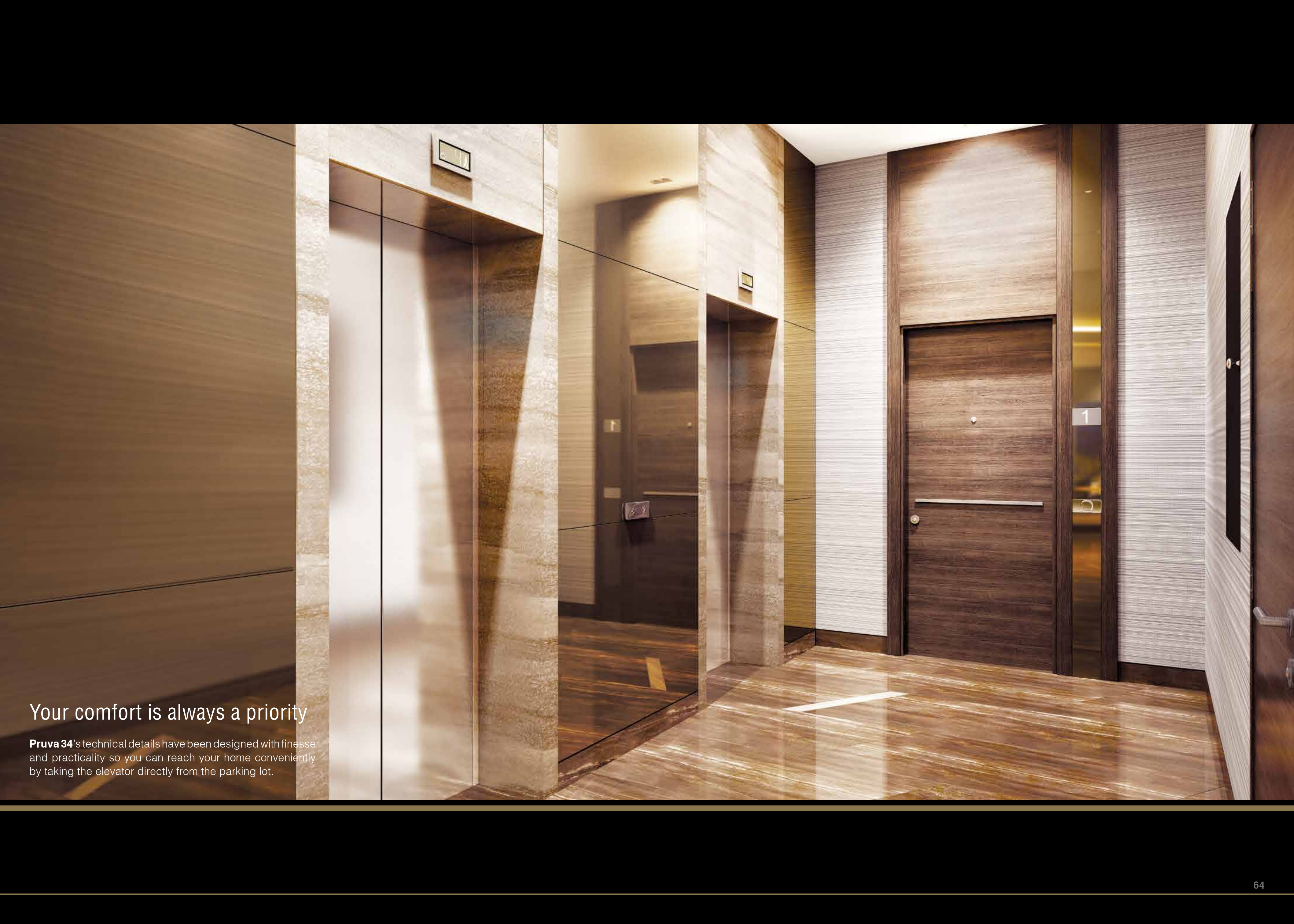
Living at Pruva 34 is your privilege

The entrance lobby will show how truly unique **Pruva 34** is with its modern, elegant, and simple design, not only to you but your visitors as well.

An elegant greeting for your guests.

At **Pruva 34**, a waiting area at the foot of the garden right beside the lobby will welcome your guests even before you do. These elegant and spacious areas reflect the uniqueness of **Pruva 34**.



A photograph of a modern building entrance. The image shows a glass-enclosed elevator area on the left, with a wooden door on the right. The walls are made of light-colored stone or concrete, and the floor is polished wood. The lighting is warm and modern.

Your comfort is always a priority

Pruva 34's technical details have been designed with finesse and practicality so you can reach your home conveniently by taking the elevator directly from the parking lot.

It is possible for your new home to have a view of all of
Marmara from a single vantage point! Welcome to **Pruva 34**



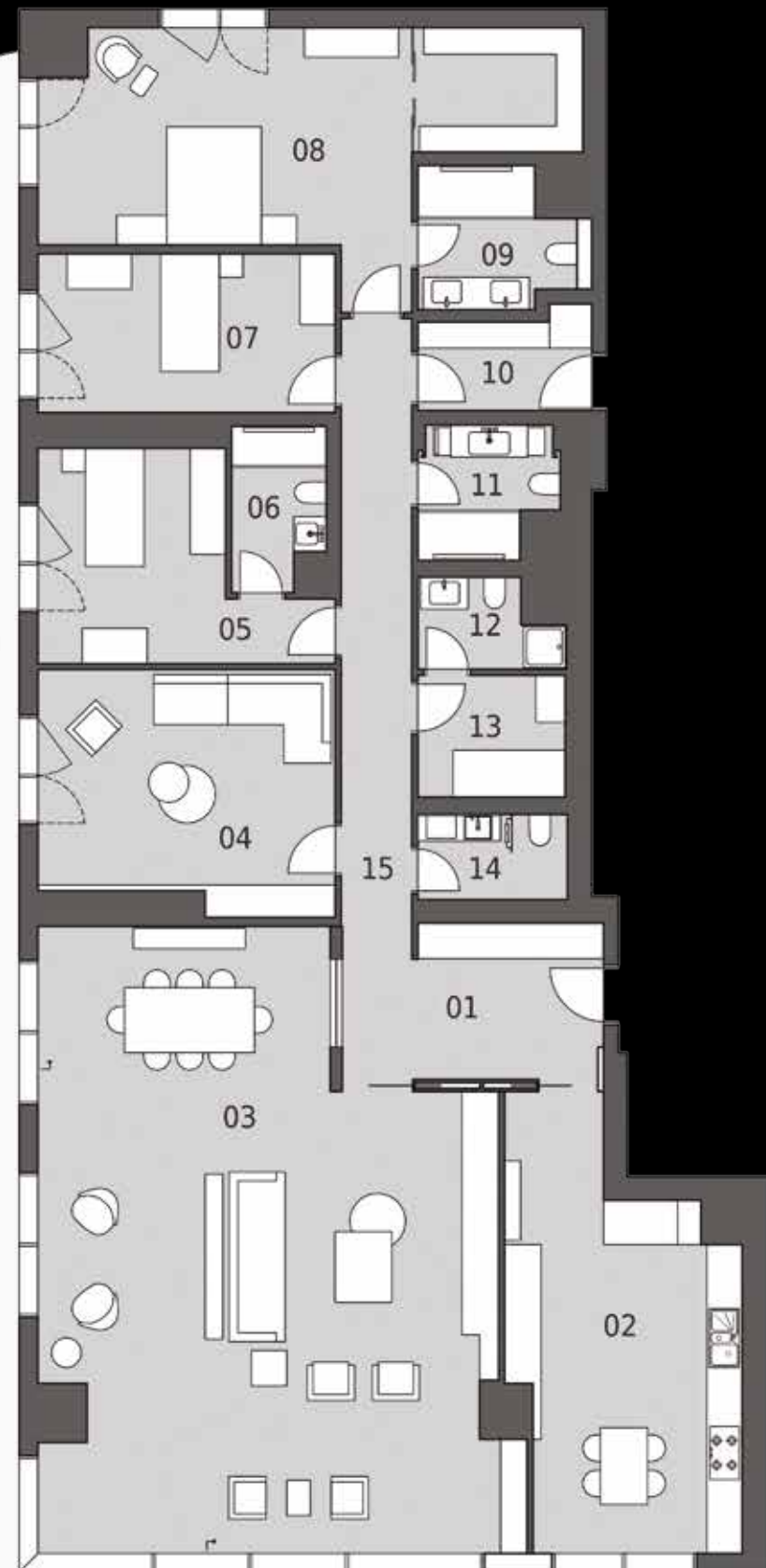
BLOCK A

ENTRANCE-LEVEL UNIT 5+1 - 337,9 m²

01 FOYER	10,9 m2
02 KITCHEN	25,6 m2
03 LIVING ROOM	74,4 m2
04 FAMILY ROOM	19,9 m2
05 BEDROOM	13,6 m2
06 BATHROOM	4,1 m2
07 BEDROOM	13,6 m2
08 MASTER BEDROOM	30,1 m2
09 MASTER BATHROOM	5,7 m2
10 EMERGENCY EXIT CORRIDOR	4,7 m2
11 BATHROOM	4,8 m2
12 BATHROOM	3,3 m2
13 STORAGE AND LAUNDRY ROOM	5,2 m2
14 BATHROOM	3,7 m2
15 HALLWAY	13,0 m2
TOTAL NET AREA:	232,4 m2

GROSS AREA*: 337,9 m2

*Five parking spaces in the garage, a storage unit of approximately 10 m², and recreational common areas are not included in the calculation of the "Gross Area."



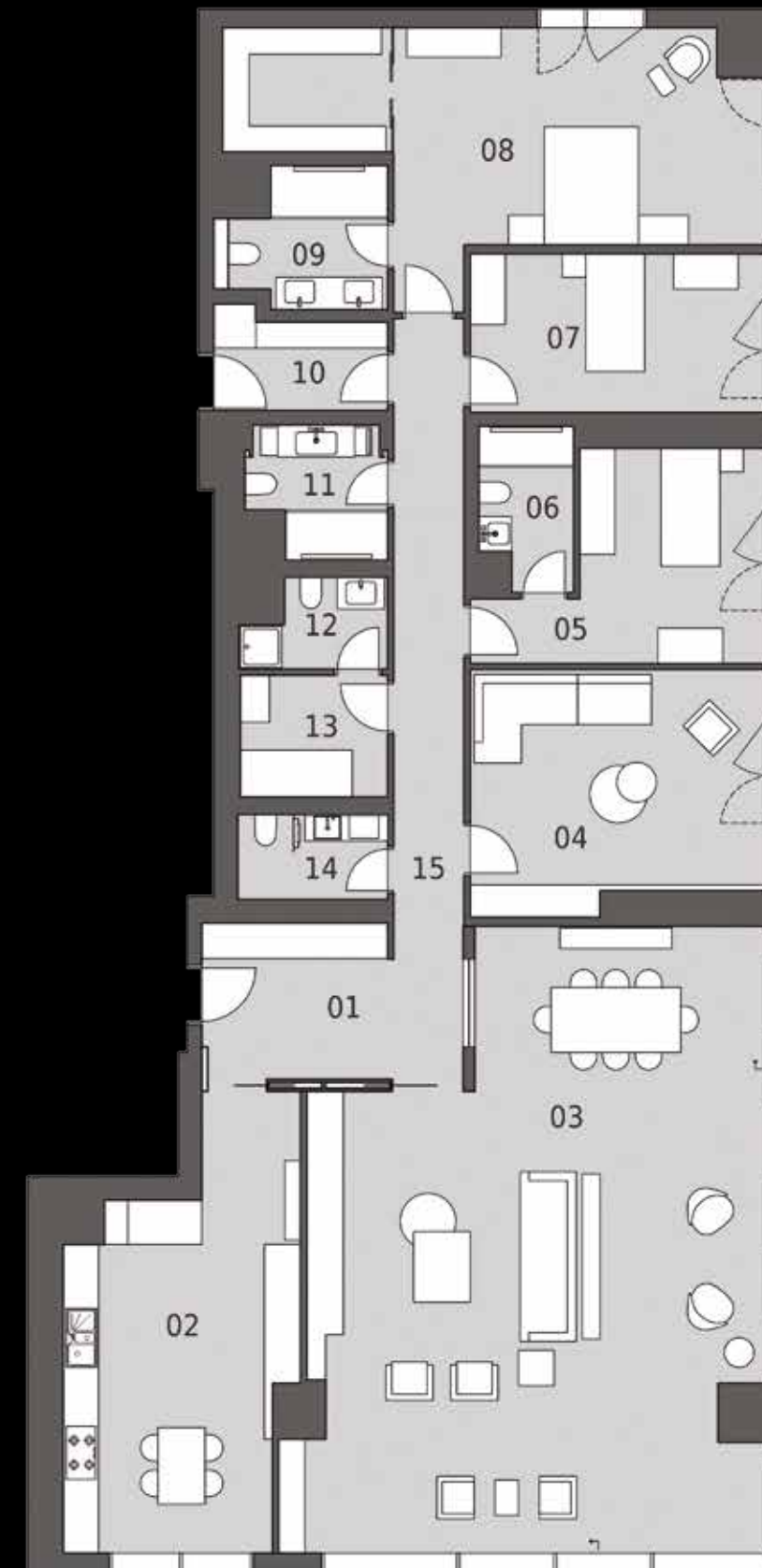
ENTRANCE-LEVEL UNIT 5+1 - 337,9 m²

BLOCK A

01 FOYER	10,9 m2
02 KITCHEN	25,6 m2
03 LIVING ROOM	74,4 m2
04 FAMILY ROOM	19,9 m2
05 BEDROOM	13,6 m2
06 BATHROOM	4,1 m2
07 BEDROOM	13,6 m2
08 MASTER BEDROOM	30,1 m2
09 MASTER BATHROOM	5,7 m2
10 EMERGENCY EXIT CORRIDOR	4,7 m2
11 BATHROOM	4,8 m2
12 BATHROOM	3,3 m2
13 STORAGE AND LAUNDRY ROOM	5,2 m2
14 BATHROOM	3,7 m2
15 HALLWAY	13,0 m2
TOTAL NET AREA:	232,4 m2

GROSS AREA*: 337,9 m2

*Four parking spaces in the garage, a storage unit of approximately 10 m², and recreational common areas are not included in the calculation of the "Gross Area."



BLOCK A

5+1 - 363,4 m²

5+1 - 363,4 m²

BLOCK A

01 FOYER	10,9 m ²
02 KITCHEN	25,4 m ²
03 LIVING ROOM	58,8 m ²
04 FAMILY ROOM	19,9 m ²
05 BEDROOM	13,6 m ²
06 BATHROOM	4,1 m ²
07 BEDROOM	13,6 m ²
08 MASTER BEDROOM	30,1 m ²
09 MASTER BATHROOM	5,6 m ²
10 EMERGENCY EXIT CORRIDOR	4,7 m ²
11 BATHROOM	4,8 m ²
12 BATHROOM	3,3 m ²
13 STORAGE AND LAUNDRY ROOM	5,2 m ²
14 BATHROOM	3,7 m ²
15 HALLWAY	13,0 m ²
16 BALCONY	35,8 m ²
TOTAL NET AREA:	252,3 m²

GROSS AREA*: 363,4 m²

*Four parking spaces in the garage, a storage unit of approximately 10 m², and recreational common areas are not included in the calculation of the "Gross Area."



01 FOYER	10,9 m ²
02 KITCHEN	25,4 m ²
03 LIVING ROOM	58,8 m ²
04 FAMILY ROOM	19,9 m ²
05 BEDROOM	13,6 m ²
06 BATHROOM	4,1 m ²
07 BEDROOM	13,6 m ²
08 MASTER BEDROOM	30,1 m ²
09 MASTER BATHROOM	5,6 m ²
10 EMERGENCY EXIT CORRIDOR	4,7 m ²
11 BATHROOM	4,8 m ²
12 BATHROOM	3,3 m ²
13 STORAGE AND LAUNDRY ROOM	5,2 m ²
14 BATHROOM	3,7 m ²
15 HALLWAY	13,0 m ²
16 BALCONY	35,8 m ²
TOTAL NET AREA:	252,3 m²

GROSS AREA*: 363,4 m²

*Four parking spaces in the garage, a storage unit of approximately 10 m², and recreational common areas are not included in the calculation of the "Gross Area."



BLOCK A

DUPLEX 5+2 - 718,7 m²

DUPLEX 5+2 - 718,7 m²

BLOCK A

LOWER FLOOR	
01 FOYER	10,9 m ²
02 KITCHEN	25,4 m ²
03 LIVING ROOM	58,8 m ²
04 FAMILY ROOM	19,9 m ²
05 BEDROOM	13,6 m ²
06 BATHROOM	4,1 m ²
07 BEDROOM	13,6 m ²
08 MASTER BEDROOM	30,1 m ²
09 MASTER BATHROOM	5,6 m ²
10 EMERGENCY EXIT CORRIDOR	4,7 m ²
11 BATHROOM	4,8 m ²
12 STORAGE CLOSET	1,7 m ²
13 BATHROOM	3,7 m ²
14 HALLWAY	19,9 m ²
15 BALCONY	35,8 m ²
TOTAL NET AREA:	252,5 m²

GROSS AREA*: **363,4 m²**

*Six parking spaces in the garage, a storage unit of approximately 10 m², and recreational common areas are not included in the calculation of the "Gross Area."



UPPER FLOOR	
01 KITCHEN	5,3 m ²
02 LIVING ROOM	58,7 m ²
03 HALLWAY	10,7 m ²
04 BEDROOM	27,3 m ²
05 BATHROOM	3,3 m ²
06 BATHROOM	2,9 m ²
07 ROOFTOP TERRACE	137,5 m ²
08 STORAGE ROOM	7,3 m ²
TOTAL NET AREA:	253,1 m²

GROSS AREA*: **355,3 m²**

*Six parking spaces in the garage, a storage unit of approximately 10 m², and recreational common areas are not included in the calculation of the "Gross Area."



BLOCK A

DUPLEX 5+2 - 718,7 m²

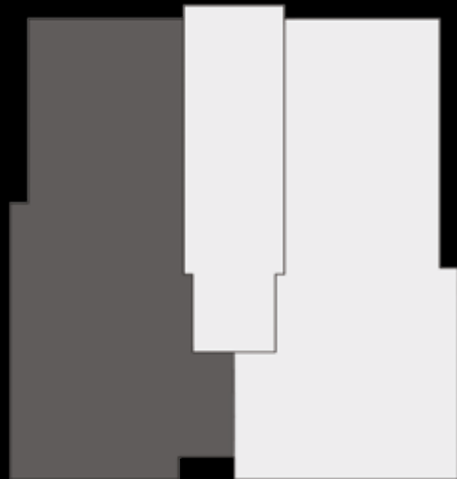
DUPLEX 5+2 - 718,7 m²

BLOCK A

LOWER FLOOR	
01 FOYER	10,9 m ²
02 KITCHEN	25,4 m ²
03 LIVING ROOM	58,8 m ²
04 FAMILY ROOM	19,9 m ²
05 BEDROOM	13,6 m ²
06 BATHROOM	4,1 m ²
07 BEDROOM	13,6 m ²
08 MASTER BEDROOM	30,1 m ²
09 MASTER BATHROOM	5,6 m ²
10 EMERGENCY EXIT CORRIDOR	4,7 m ²
11 BATHROOM	4,8 m ²
12 STORAGE CLOSET	1,7 m ²
13 BATHROOM	3,7 m ²
14 HALLWAY	19,9 m ²
15 BALCONY	35,8 m ²
TOTAL NET AREA:	252,5 m ²

GROSS AREA*: 363,4 m²

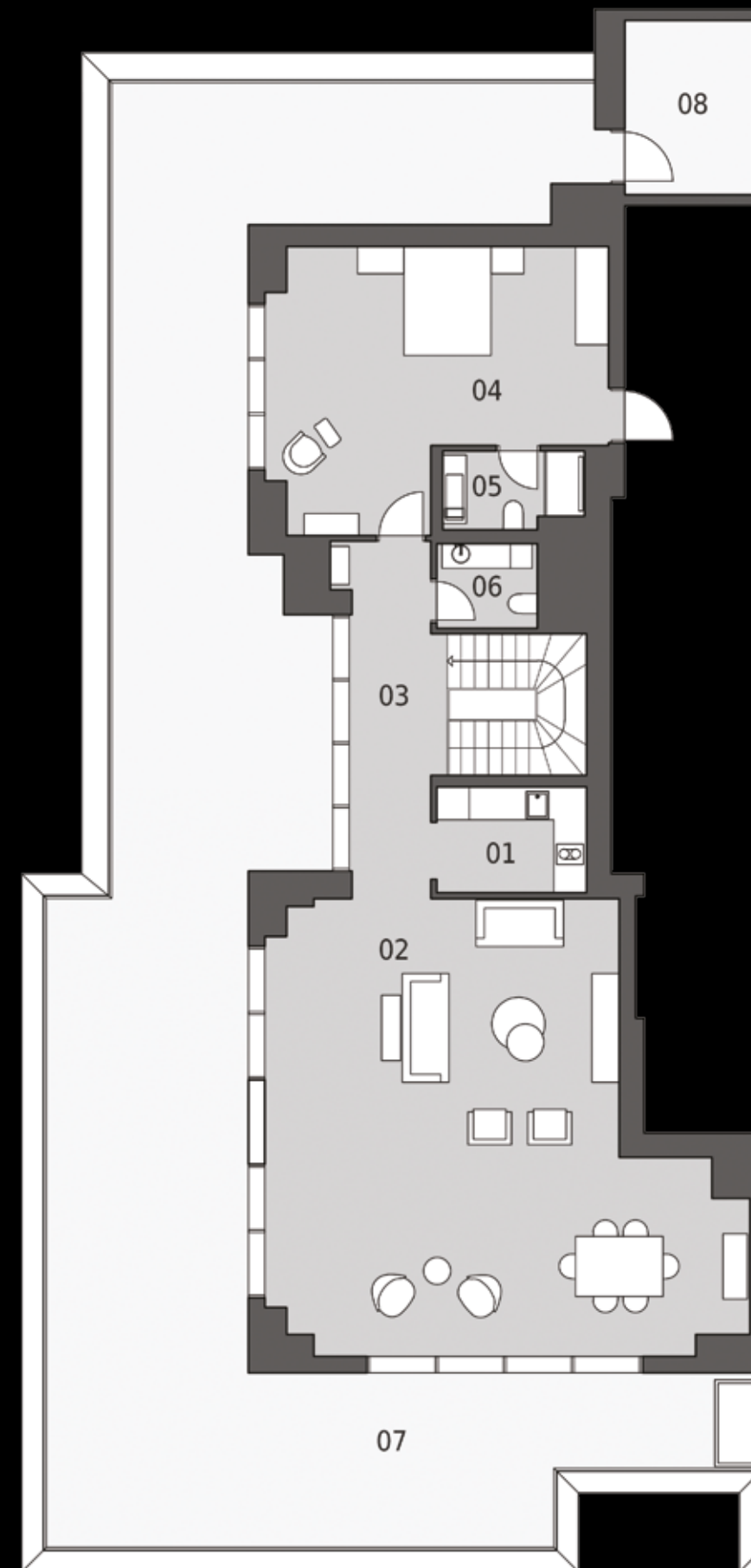
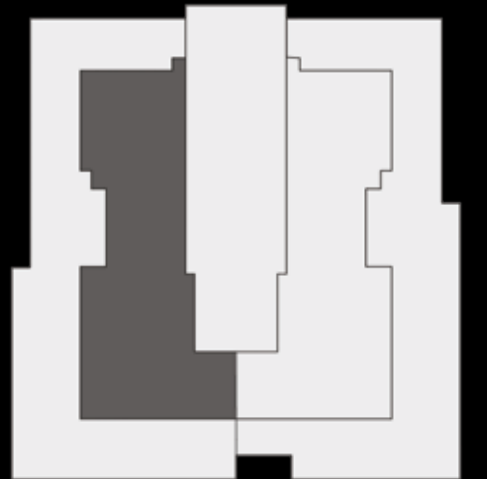
*Six parking spaces in the garage, a storage unit of approximately 10 m², and recreational common areas are not included in the calculation of the "Gross Area."



UPPER FLOOR	
01 KITCHEN	5,3 m ²
02 LIVING ROOM	58,7 m ²
03 HALLWAY	10,7 m ²
04 BEDROOM	27,3 m ²
05 BATHROOM	3,3 m ²
06 BATHROOM	2,9 m ²
07 ROOFTOP TERRACE	137,5 m ²
08 STORAGE ROOM	10,3 m ²
TOTAL NET AREA:	256,1 m ²

GROSS AREA*: 355,3 m²

*Four parking spaces in the garage, a storage unit of approximately 10 m², and recreational common areas are not included in the calculation of the "Gross Area."



BLOCK B

ENTRANCE LEVEL 4+1 - 290,8 m²

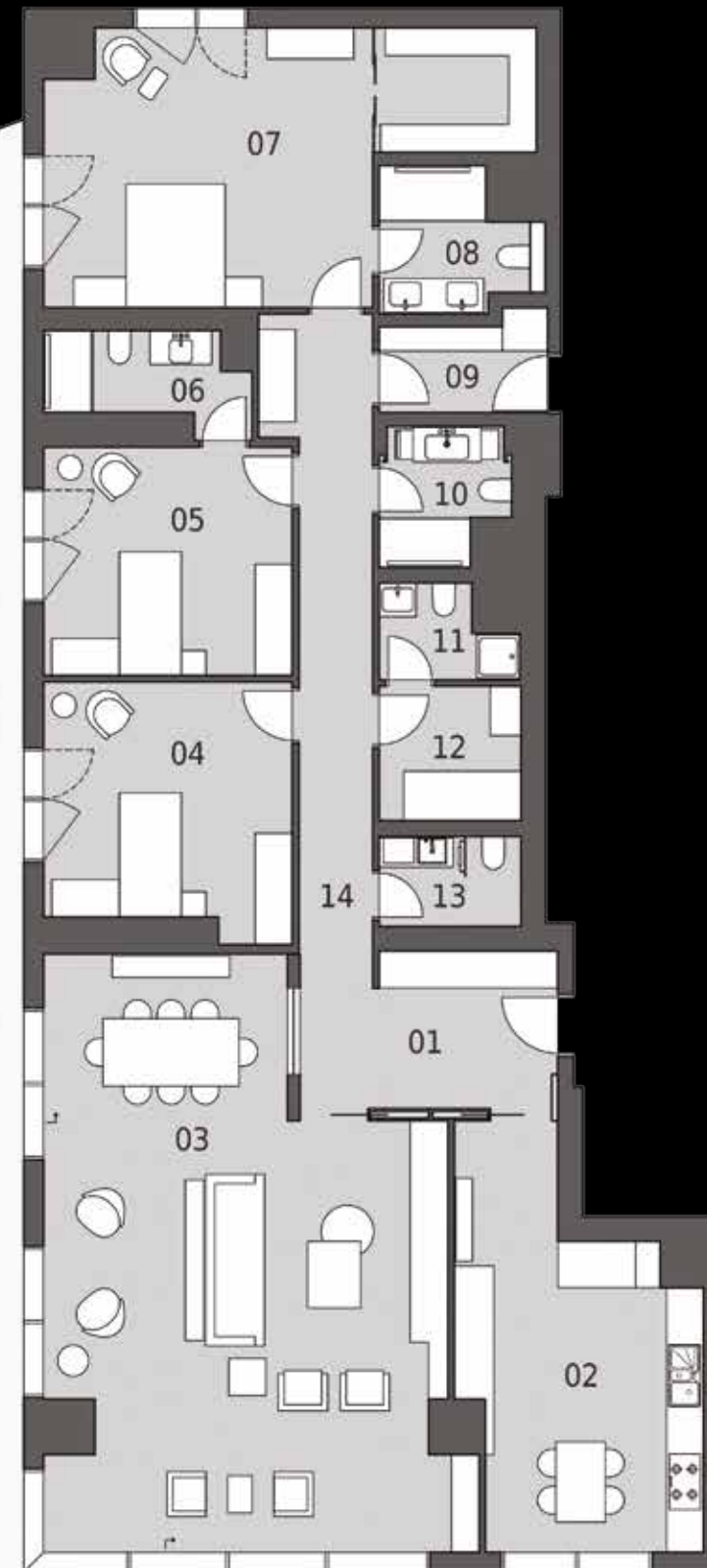
ENTRANCE LEVEL 4+1 - 290,8 m²

BLOCK B

01 FOYER	9,8 m ²
02 KITCHEN	21,9 m ²
03 LIVING ROOM	56,0 m ²
04 BEDROOM	15,9 m ²
05 BEDROOM	14,9 m ²
06 BATHROOM	4,5 m ²
07 MASTER BEDROOM	28,8 m ²
08 MASTER BATHROOM	4,9 m ²
09 EMERGENCY EXIT CORRIDOR	4,0 m ²
10 BATHROOM	4,2 m ²
11 BATHROOM	2,9 m ²
12 STORAGE AND LAUNDRY ROOM	5,0 m ²
13 BATHROOM	3,3 m ²
14 HALLWAY	14,3 m ²
TOTAL NET AREA:	190,3 m ²

GROSS AREA*: 290,8 m²

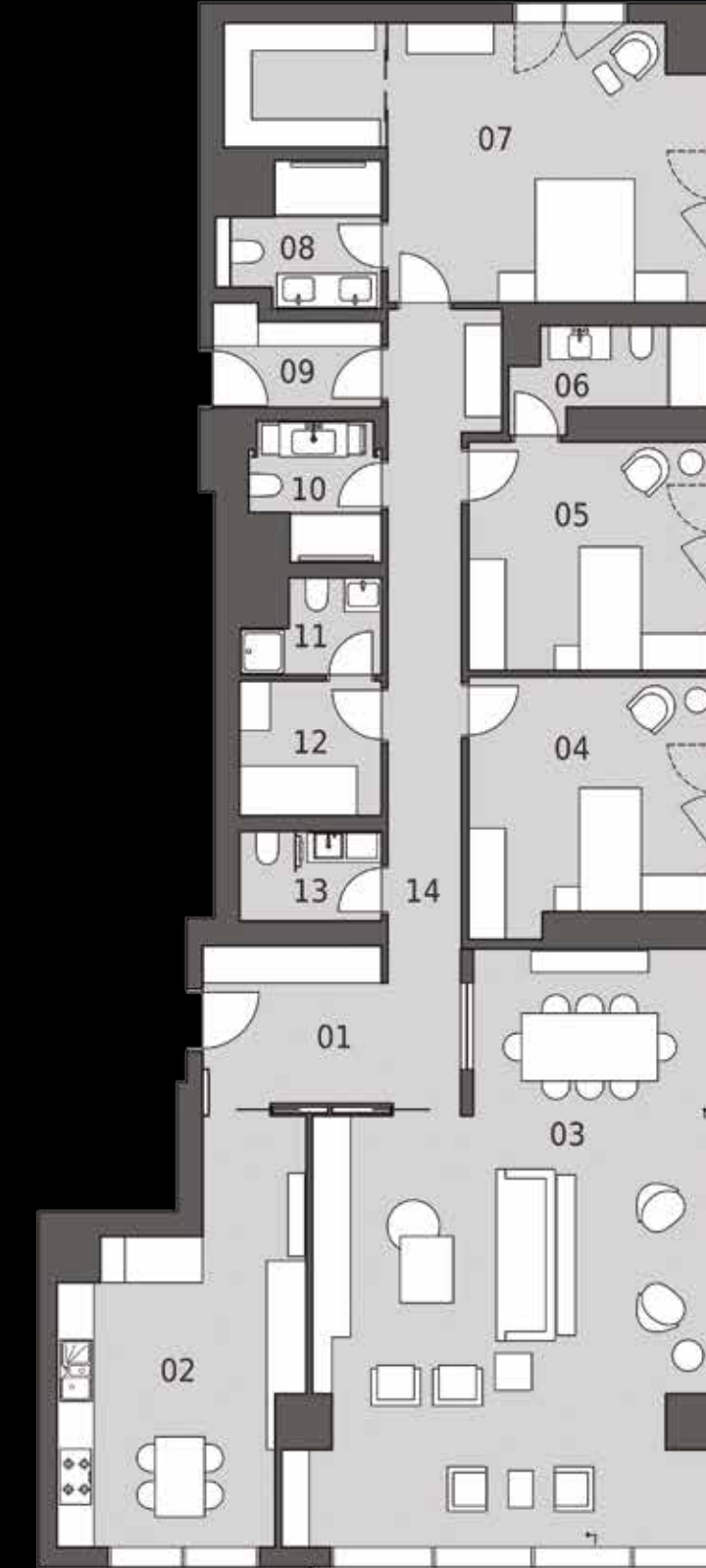
*Four parking spaces in the garage, a storage unit of approximately 10 m², and recreational common areas are not included in the calculation of the "Gross Area."



01 FOYER	9,8 m ²
02 KITCHEN	21,9 m ²
03 LIVING ROOM	56,0 m ²
04 BEDROOM	15,9 m ²
05 BEDROOM	14,9 m ²
06 BATHROOM	4,5 m ²
07 MASTER BEDROOM	28,8 m ²
08 MASTER BATHROOM	4,9 m ²
09 EMERGENCY EXIT CORRIDOR	4,0 m ²
10 BATHROOM	4,2 m ²
11 BATHROOM	2,9 m ²
12 STORAGE AND LAUNDRY ROOM	5,0 m ²
13 BATHROOM	3,3 m ²
14 HALLWAY	14,3 m ²
TOTAL NET AREA:	190,3 m ²

GROSS AREA*: 290,8 m²

*Four parking spaces in the garage, a storage unit of approximately 10 m², and recreational common areas are not included in the calculation of the "Gross Area."



BLOCK B

4+1 - 310,3 m²

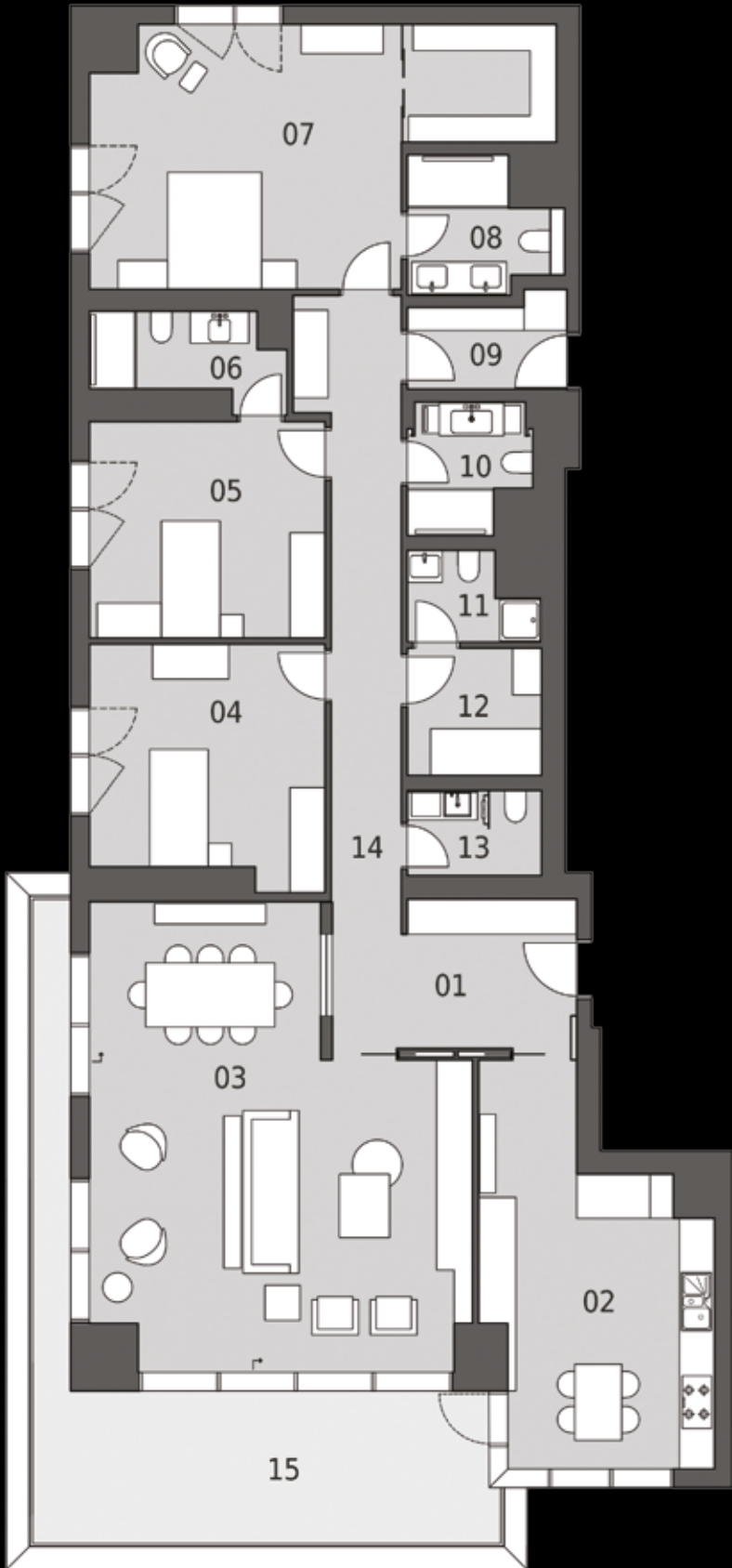
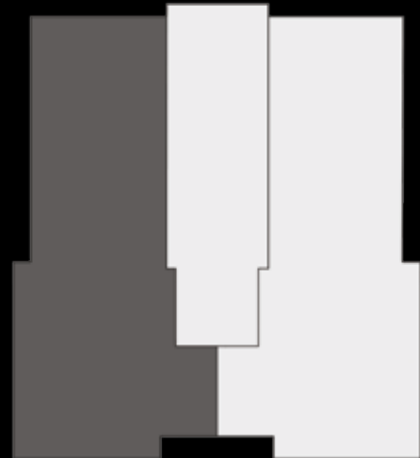
4+1 - 310,3 m²

BLOCK B

01 FOYER	9,8 m ²
02 KITCHEN	21,9 m ²
03 LIVING ROOM	44,6 m ²
04 BEDROOM	15,9 m ²
05 BEDROOM	14,9 m ²
06 BATHROOM	4,5 m ²
07 MASTER BEDROOM	28,8 m ²
08 MASTER BATHROOM	4,9 m ²
09 EMERGENCY EXIT CORRIDOR	4,0 m ²
10 BATHROOM	4,2 m ²
11 BATHROOM	2,9 m ²
12 STORAGE AND LAUNDRY ROOM	5,0 m ²
13 BATHROOM	3,3 m ²
14 HALLWAY	14,3 m ²
15 BALCONY	31,3 m ²
TOTAL NET AREA:	210,3 m ²

GROSS AREA*: 310,3 m²

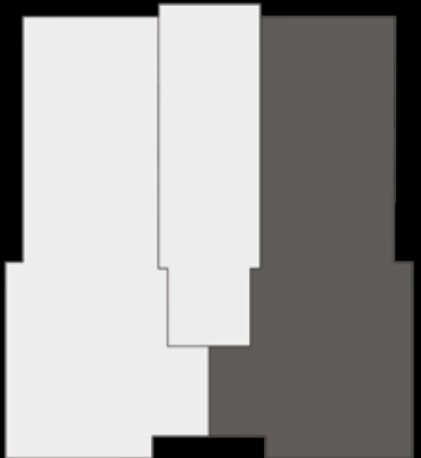
*Four parking spaces in the garage, a storage unit of approximately 10 m², and recreational common areas are not included in the calculation of the "Gross Area."



01 FOYER	9,8 m ²
02 KITCHEN	21,9 m ²
03 LIVING ROOM	44,6 m ²
04 BEDROOM	15,9 m ²
05 BEDROOM	14,9 m ²
06 BATHROOM	4,5 m ²
07 MASTER BEDROOM	28,8 m ²
08 MASTER BATHROOM	4,9 m ²
09 EMERGENCY EXIT CORRIDOR	4,0 m ²
10 BATHROOM	4,2 m ²
11 BATHROOM	2,9 m ²
12 STORAGE AND LAUNDRY ROOM	5,0 m ²
13 BATHROOM	3,3 m ²
14 HALLWAY	14,3 m ²
15 BALCONY	31,3 m ²
TOTAL NET AREA:	210,3 m ²

GROSS AREA*: 310,3 m²

*Four parking spaces in the garage, a storage unit of approximately 10 m², and recreational common areas are not included in the calculation of the "Gross Area."



BLOCK B

DUPLEX 4+2 - 612,5 m²

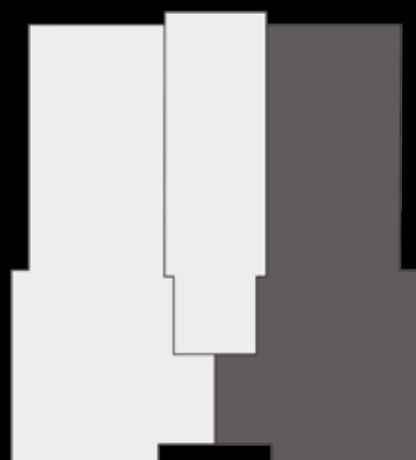
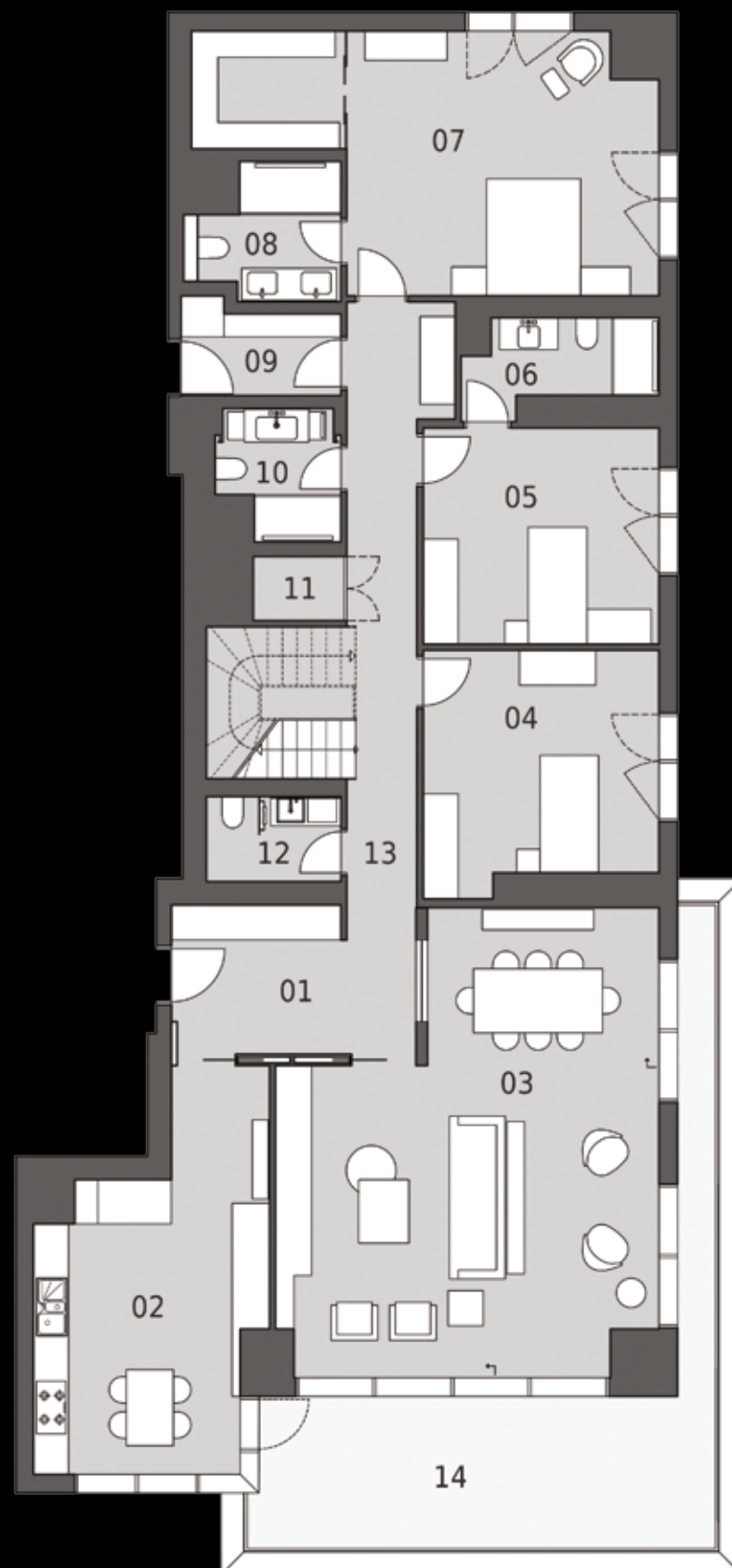
DUPLEX 4+2 - 612,5 m²

BLOCK B

LOWER FLOOR	
01 FOYER	9,8 m ²
02 KITCHEN	21,9 m ²
03 LIVING ROOM	44,6 m ²
04 BEDROOM	15,9 m ²
05 BEDROOM	14,9 m ²
06 BATHROOM	4,5 m ²
07 MASTER BEDROOM	28,8 m ²
08 MASTER BATHROOM	4,9 m ²
09 EMERGENCY EXIT CORRIDOR	4,0 m ²
10 BATHROOM	4,2 m ²
11 STORAGE CLOSET	2,2 m ²
12 BATHROOM	3,3 m ²
13 HALLWAY	20,7 m ²
14 BALCONY	31,3 m ²
TOTAL NET AREA:	210,8 m²

GROSS AREA*: 310,3 m²

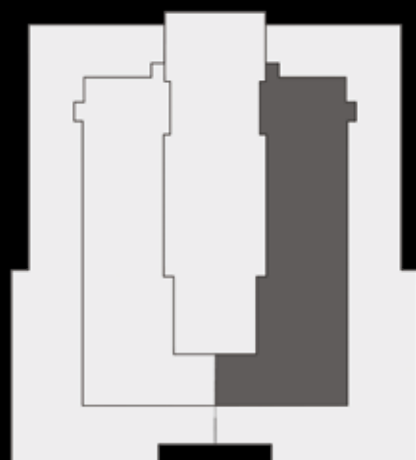
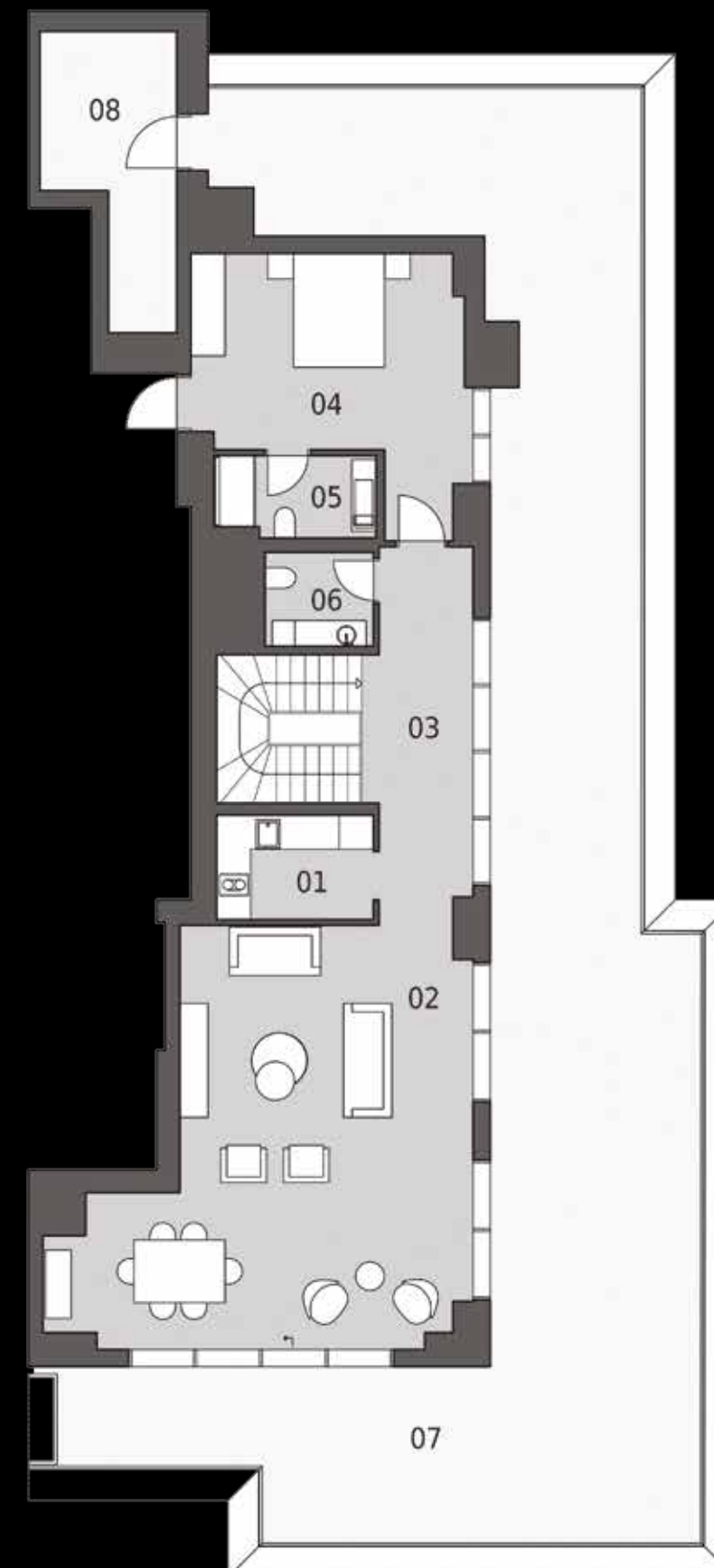
*Five parking spaces in the garage, a storage unit of approximately 10 m², and recreational common areas are not included in the calculation of the "Gross Area."



UPPER FLOOR	
01 KITCHEN	5,1 m ²
02 LIVING ROOM	43,5 m ²
03 HALLWAY	10,9 m ²
04 BEDROOM	18,6 m ²
05 BATHROOM	4,0 m ²
06 BATHROOM	3,1 m ²
07 ROOFTOP TERRACE	116,0 m ²
08 STORAGE ROOM	9,7 m ²
TOTAL NET AREA:	210,8 m²

GROSS AREA*: 302,2 m²

*Five parking spaces in the garage, a storage unit of approximately 10 m², and recreational common areas are not included in the calculation of the "Gross Area."



BLOCK B

DUPLEX 4+2 - 612,5 m²

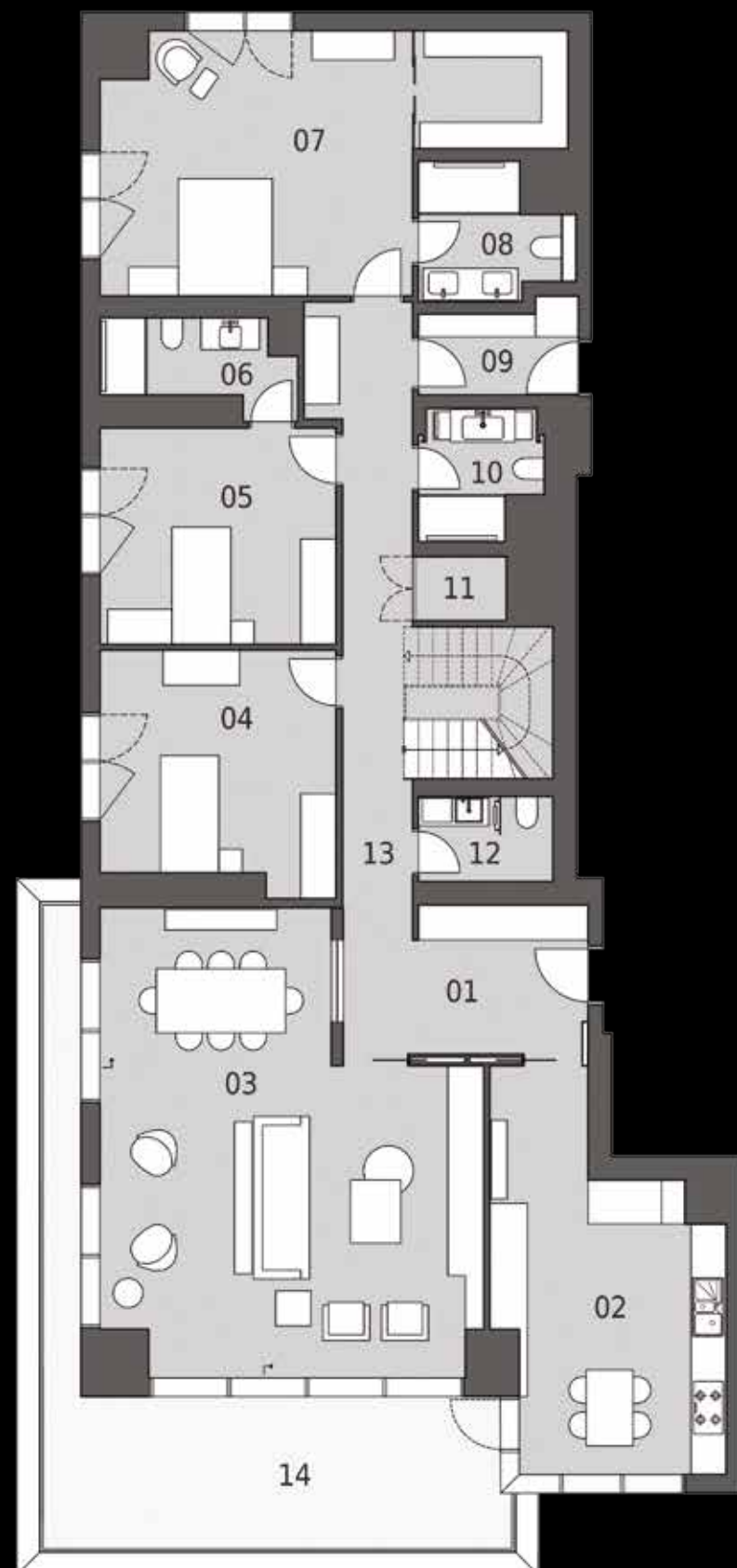
DUPLEX 4+2 - 612,5 m²

BLOCK B

LOWER FLOOR	
01 FOYER	9,8 m ²
02 KITCHEN	21,9 m ²
03 LIVING ROOM	44,6 m ²
04 BEDROOM	15,9 m ²
05 BEDROOM	14,9 m ²
06 BATHROOM	4,5 m ²
07 MASTER BEDROOM	28,8 m ²
08 MASTER BATHROOM	4,9 m ²
09 EMERGENCY EXIT CORRIDOR	4,0 m ²
10 BATHROOM	4,2 m ²
11 STORAGE CLOSET	2,2 m ²
12 BATHROOM	3,3 m ²
13 HALLWAY	20,7 m ²
14 BALCONY	31,3 m ²
TOTAL NET AREA:	210,8 m²

GROSS AREA*: 310,3 m²

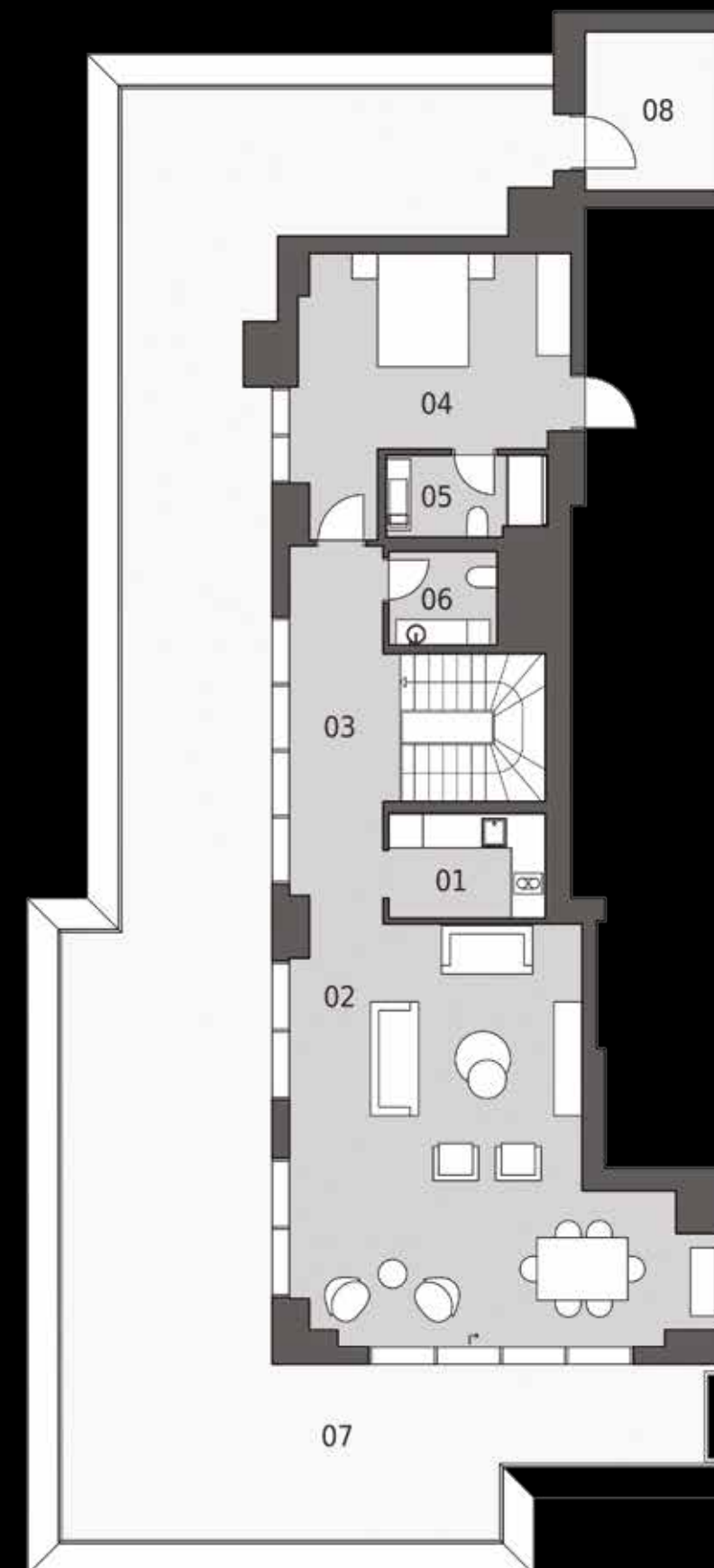
*Five parking spaces in the garage, a storage unit of approximately 10 m², and recreational common areas are not included in the calculation of the "Gross Area."



UPPER FLOOR	
01 KITCHEN	5,1 m ²
02 LIVING ROOM	43,5 m ²
03 HALLWAY	10,9 m ²
04 BEDROOM	18,6 m ²
05 BATHROOM	4,0 m ²
06 BATHROOM	3,1 m ²
07 ROOFTOP TERRACE	116,0 m ²
08 STORAGE ROOM	6,7 m ²
TOTAL NET AREA:	207,8 m²

GROSS AREA*: 302,2 m²

*Five parking spaces in the garage, a storage unit of approximately 10 m², and recreational common areas are not included in the calculation of the "Gross Area."



Architectural Project	: Alpar Mimarlık İnşaat Taahhüt Ltd. Şti.
Statics Project	: Yapı Teknik Proje Müşavirlik ve Mühendislik Ltd. Şti.
Mechanical & Electrical Project	: Anka Proje Mekanik Elektrik İnşaat Mühendislik Danışmanlık A.Ş.
Infrastructure Project	: Akad Proje ve Müh. Ltd Şti.
Landscaping Project	: Tyla Peyzaj Mimarlığı ve Danışmanlık
Interior Design Project	: Gönye Proje Tasarım Mimarlık İnş. San ve Tic. Ltd. Şti.
Building Inspection	: Aks Proje Yapı Denetim Ltd. Şti.
Earthquake Safety Consultant	: Ahmet Sağlamer, Ph.D., Professor, Istanbul Technical University Ener Müh. Mim ve Dan. Ltd. Şti.
Statics Project Consultant	: İbrahim Bakırtaş, Ph.D., Professor, Istanbul Technical University
Cement Safety Consultant	: Hasan Yıldırım, Assistant Professor, Istanbul Technical University
Fire Safety Consultant	: Tuncay Akdağ - İtina İnşaat ve Dan. Tic. Ltd. Şti.
Façade Consultant	: Salih Sekban, Architect - CGW Danışmanlık Alüminyum San. Dan. ve Müh. Tic. Ltd. Şti.
Acoustics & Noise Control Consultant	: Duyal Karagözoğlu, Ph.D.
Elevator Safety Consultant	: Erdiç Yılmaz - Cersan Asansör İnş. Gıda Turizm İç ve Dış Tic. Ltd. Şti.
Advertising Agency	: VIETNAM



